

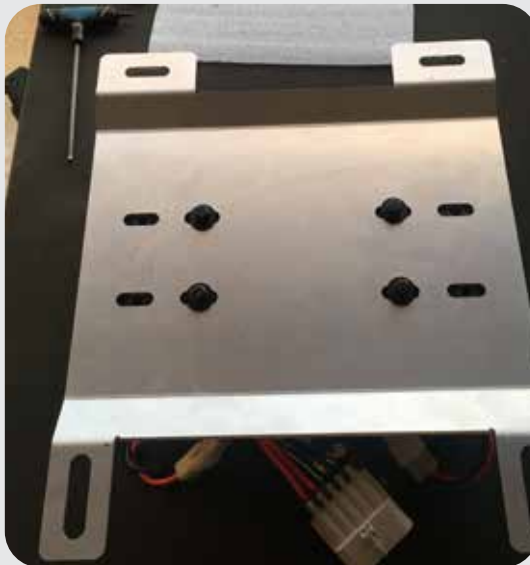
ARB Twin Compressor Mount - Installation Instructions

Tools required for installation:

7/32" allen wrench, Two 5/8" wrenches, 4mm allen wrench, 10mm wrench, and optional rivet nut installation tool

Step 1

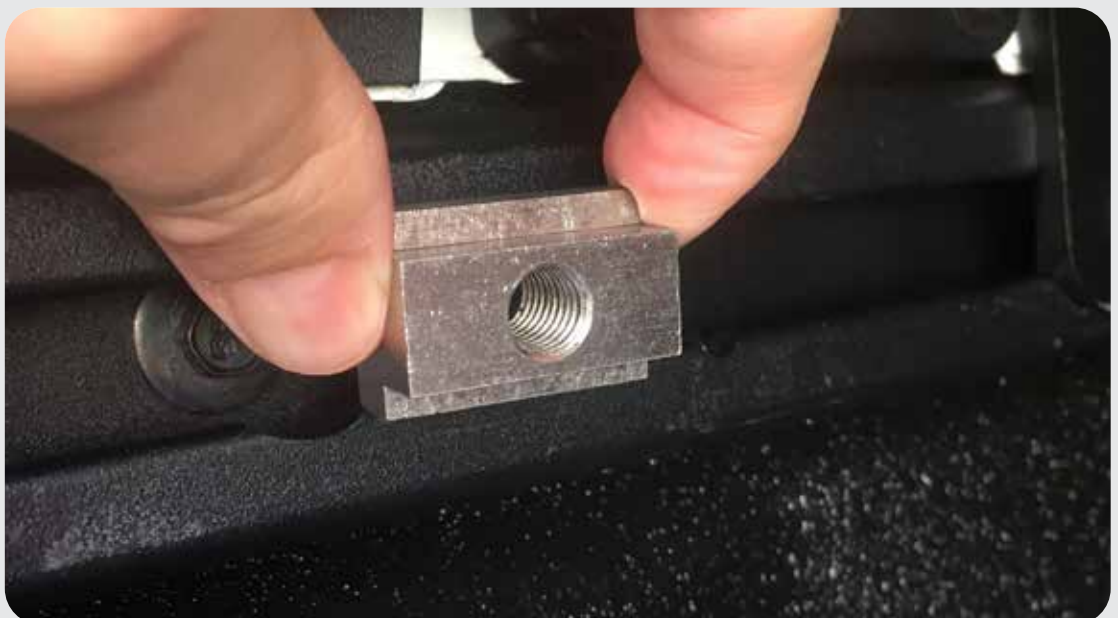
Install the ARB Twin compressor to the mount using the ARB supplied mounting bolts.



Step 2

Install the provided t-slot nuts into the Trail Rail. The Twin mount can be mounted on left or right side of bed.

Note: The area that is larger to insert the t-slot nuts is located on the cab end of the rail.

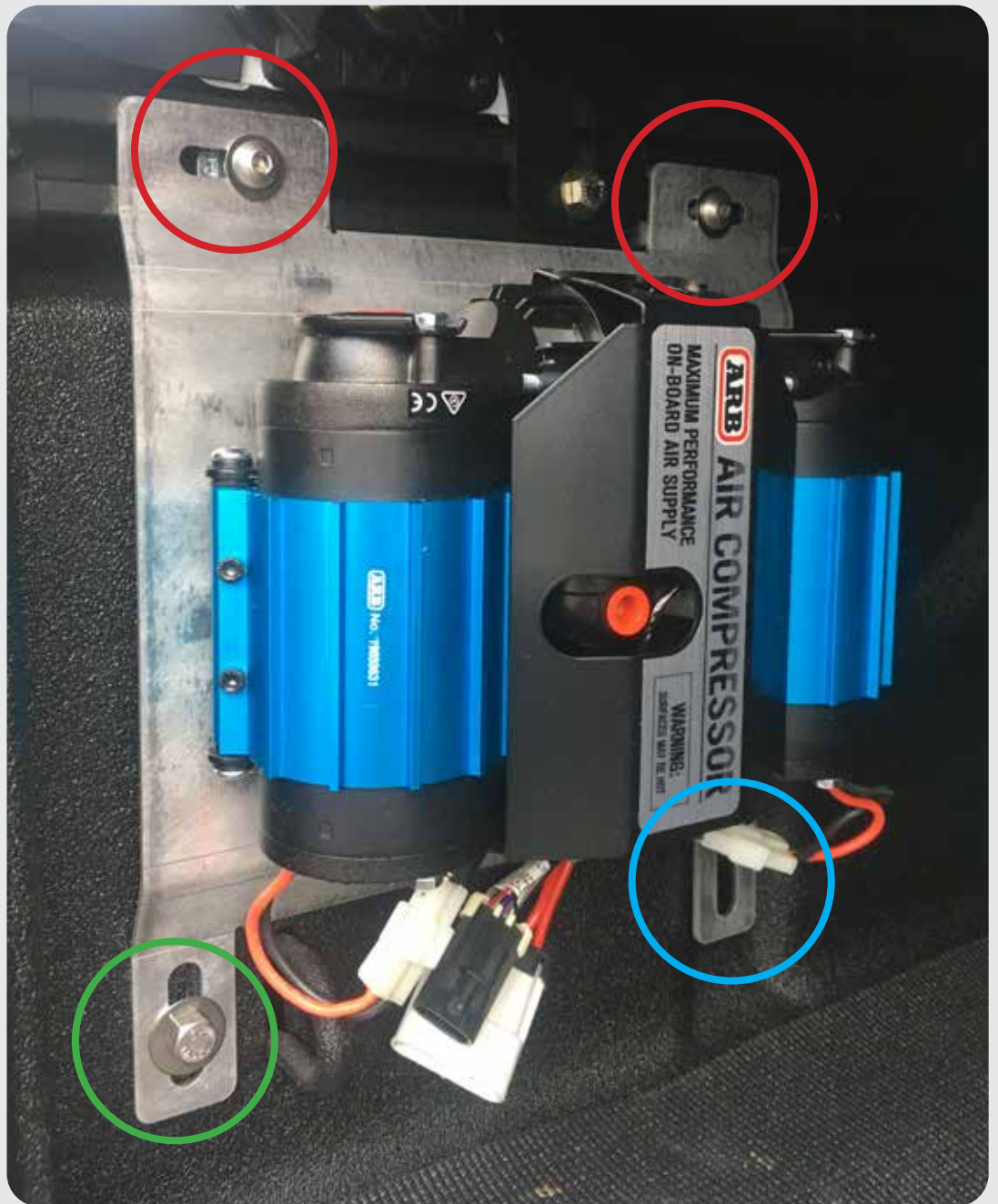


Step 3

Install the ARB Twin compressor and mount to the rails using the two 3/8" button head screws and washers provided using a 7/32" allen wrench. (Red Circles)

Fasten the bottom of mount using the included 7/16" bolt and washers. There is an optional rivet nut included that will fit the factory hole in the bed. If not using the rivet nut, there are two washers and a bolt also included to both the mount through the bed. (Green Circle)

Optional rubber bump stop is also included that can be mounted behind the second lower mounting point to eliminate any movement. (Blue Circle)



Optional rivet nut installation that will fit the factory hole in the bed (Green Circle). Note that the 7/16" bolt will feel loose when installing but fastens the mount very well.



Optional rubber bump stop is also included that can be mounted behind the second lower mounting point. Install bump stop before installing mount to rail. (Blue Circle)



Step 4

If installing the optional protective guard. Place the guard over the existing mounting areas (Red Circles) before installing the hardware. This may be a little difficult due to the weight of the compressor. Having a second person to help out is recommended but not required.



Please let us know if you have any questions - eight13design@gmail.com