

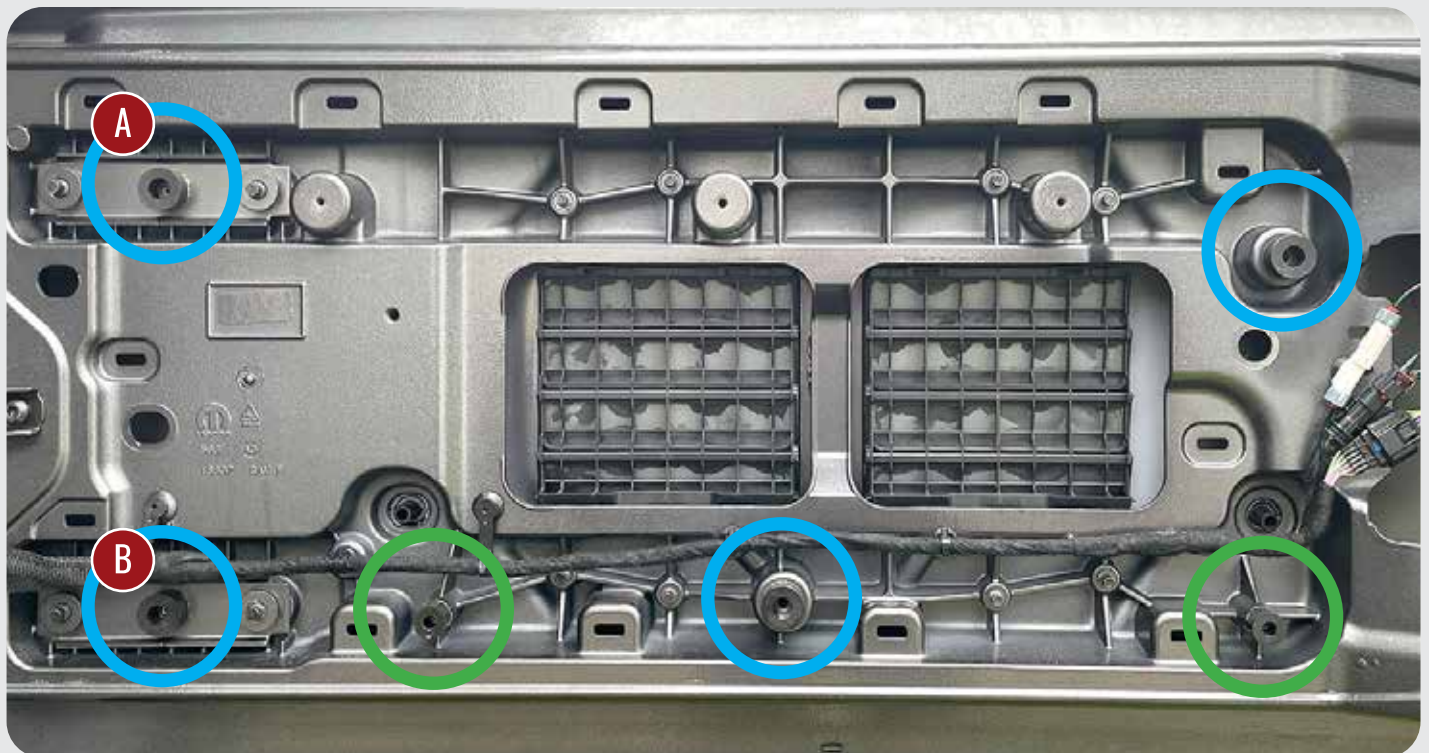
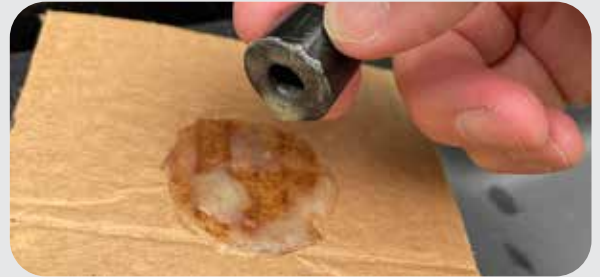
Jeep JL/JLU Rear Gate Air Compressor Enclosure & MOLLE Panel

Tools required for installation:

4mm / 5mm Allen Wrenches, 5mm Socket Wrench, Interior Panel Removal Tool, Spray or Tube Adhesive, Scissors, Anti-Seize

Setting Up the Rear Gate and Base Plate:

Remove the plastic panel from the rear gate using an interior body panel removal tool. It is also possible to remove by hand if you start in the lower left corner. Be careful pulling, some of the clips can be tight and you risk bending the panel. In locations **A,B** remove the screws that are in place using a 5mm socket. These screws will be replaced. Next, use four 1" x .5" spacers in the **(Blue Circle)** areas marked below. There are two .75" x .5" spacers for the **(Green Circle)** areas. You can use spray adhesive or a quick set adhesive to adhere the spacer to each location. Be careful not to get adhesive in the screw threads. Next, install the rubber weather stripping around the edge of the base panel leaving approximately 1/8" inside the edge of the base panel. You can use scissors to cut the weather stripping for extreme corners.



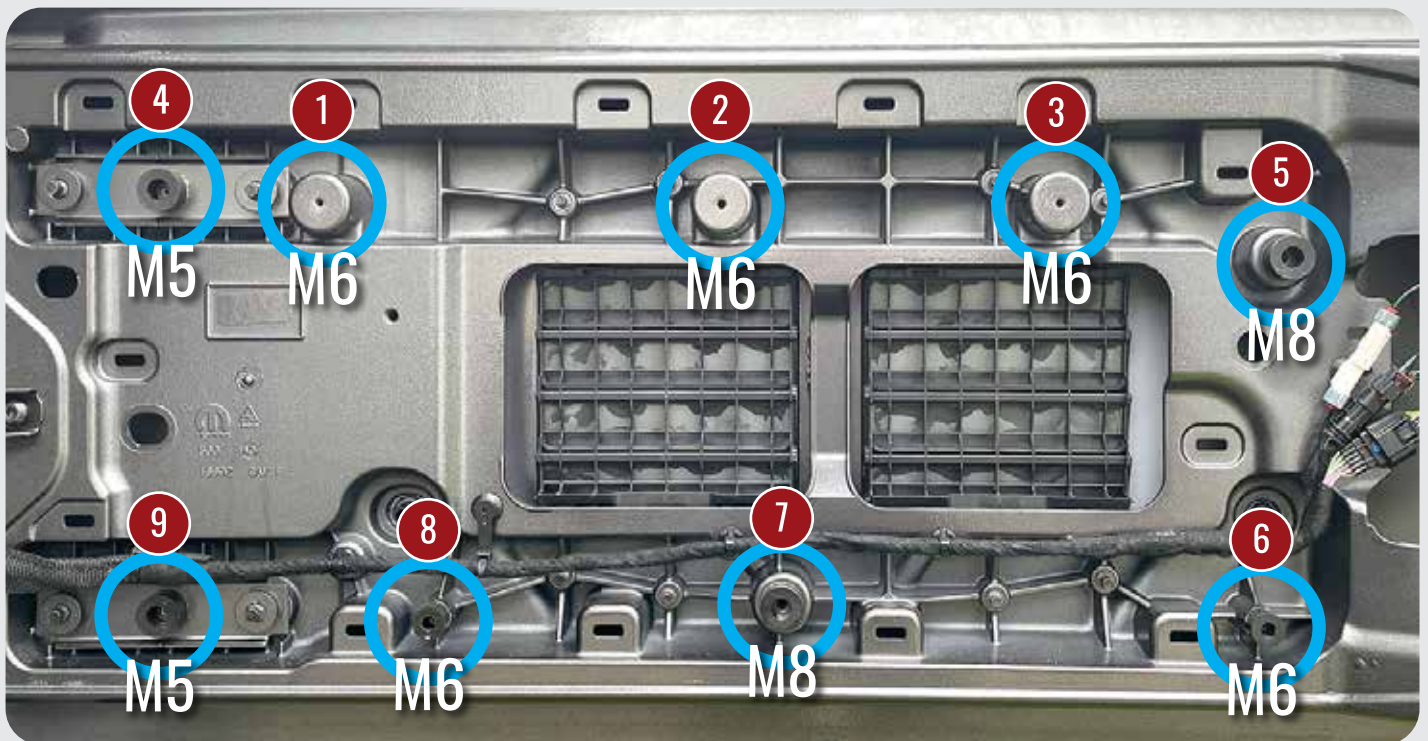
Installing Your Air Compressor to the Base Panel:

Install your ViAir or ARB Twin/Single compressor to the base panel using the hardware that came with your compressor. Once your compressor is installed and before installing the base panel, run the wiring through the large hole in the base panel (pink oval) and the compressor wiring harness out the left side of the base panel along side the rear gate wiring strap (green oval). Be sure to use some sort of wire protector where the wire may rub the metal.



Installing the Base Panel:

Once your compressor wiring is routed correctly, hold the base panel in place. You may need a helper to do so. The diagram below shows the corresponding screws (M5/M6/M8) that are used for each location. Using a small amount of anti-seize on the screws, start with screws 1,2,3 to get your position set and help hold the weight of the base panel. Do not fully tighten screws. Now, install screws 4,5,6,7 into the base panel. Before tightening screws 1-7 make sure screw 9 aligns correctly with the base panel but do not install this screw yet. Screws 8,9 are installed once you put the enclosure/cover in place over the compressor.



Installing the Compressor Enclosure/Cover:

The enclosure/cover is installed with two M6 screws at the top into the existing rivnuts in the base panel. Also use a small amount of anti-seize on these screws. The two lower screws 8,9 hold the lower part of the enclosure/cover in place but they also fasten down the lower corner of the base panel. Depending on what compressor you are installing, you will need to install your air coupler with air line and switch with wiring in place before installing the compressor cover.



Installing the MOLLE Panel:

There are four pre-installed rivnuts in the base panel for mounting the MOLLE panel. Install the MOLLE panel using the four included M6 screws, washers and .75" x .5" spacers into the base panel like you see in the photo to the right. Use a small amount of anti-seize on the screws. **DO NOT** overtighten the screws. Doing so may distort the spacers and strip the rivnut threads.

