

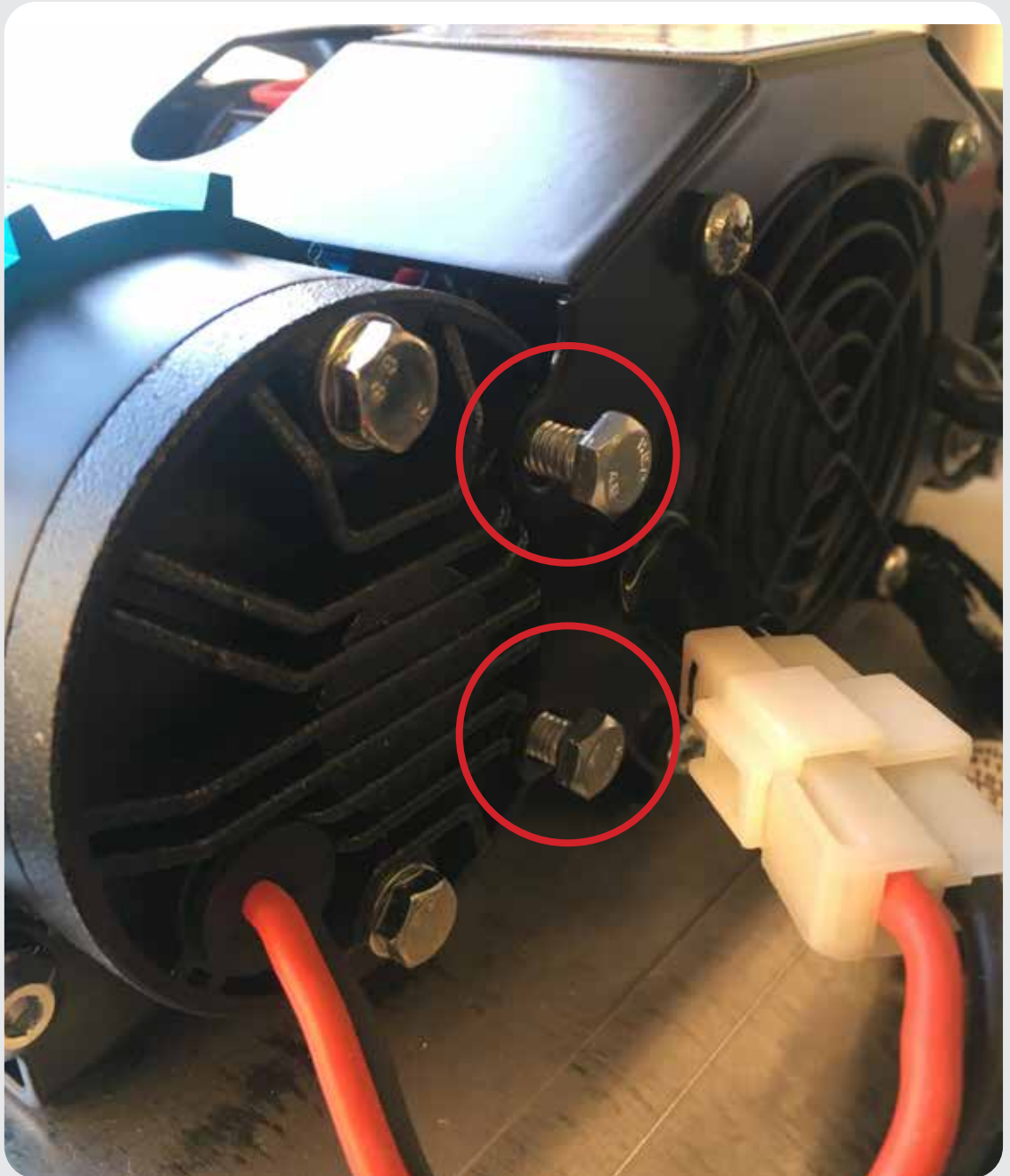
ARB Twin Compressor Switch Plate - Installation Instructions

Tools required for installation:
4mm allen wrench, 10mm wrench

Step 1

Remove the two stock compressor bracket bolts (RED Circle) using a 10mm wrench.

Note: Depending on if you chose the right or left side of the bed to mount when you bought your switch, these directions can apply to the opposite side of the compressor also.



Step 2

Setup for base mount and switch only.

Next, if using the switch plate with the base mount only, setup the switch plate using both included 6mm screws and washers. Place the black nylon spacers on the backside of the switch plate (Blue Circle).



Hand tighten both screws to the compressor.

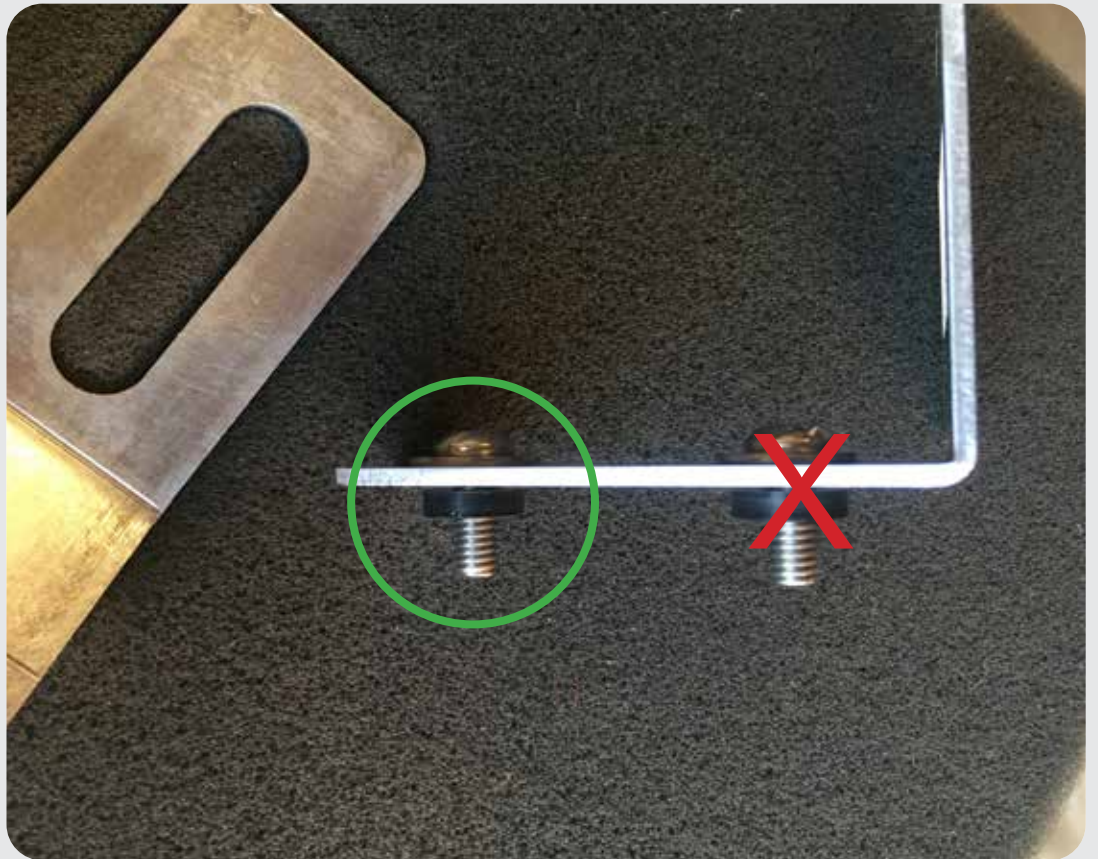


Please let us know if you have any questions - eight13design@gmail.com

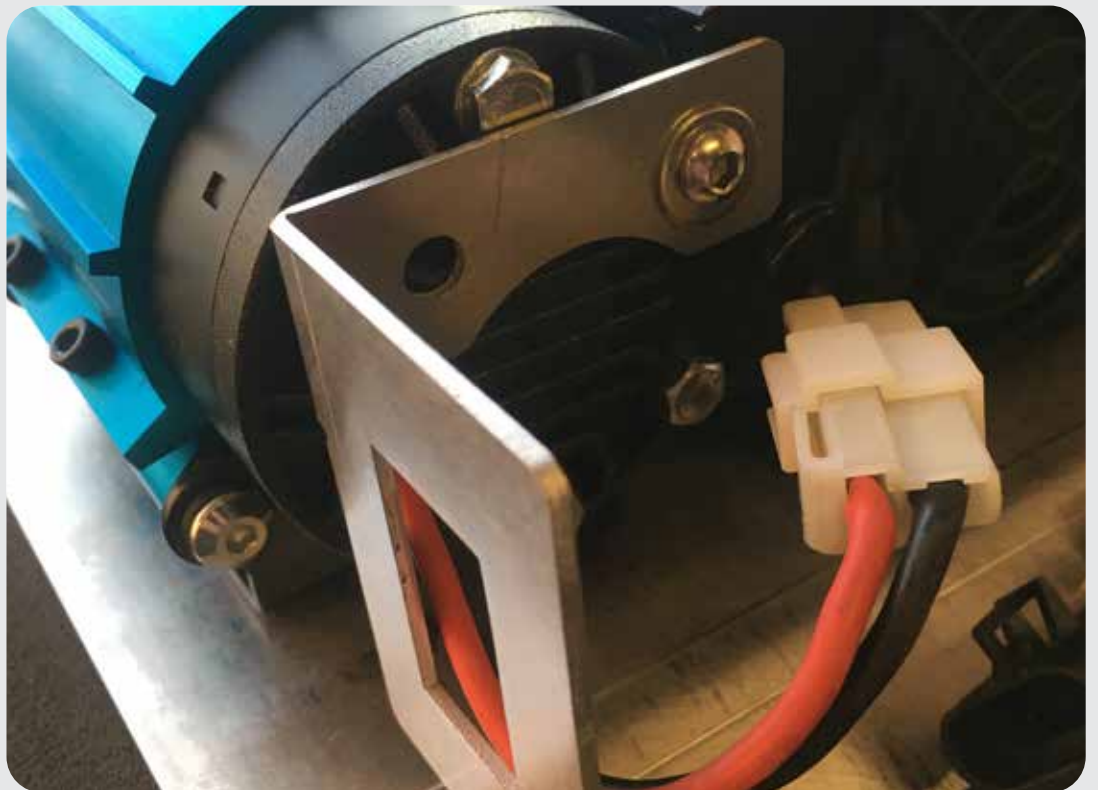
Step 2

Setup for base mount, compressor guard and switch.

If using the switch plate with the base mount and the optional protective guard, setup the switch plate using one of the included 6mm screws and washers. Place the black nylon spacer on the backside of the switch plate (Green Circle).



In this position the switch will sit to the side to make it accessible through the optional protective guard.



Please let us know if you have any questions - eight13design@gmail.com